

MVHR Servicing & Repairs

Improving Indoor Air Quality

Part-F Building Services. Specialists in Aftercare Services for Heat Recovery Systems.

part-f.co.uk

OPEN

The UAE's finest restaurants, reviewed and rated for 2023



New guide out now

Home > Residential > Tomèf's bespoke artistic pied-à-terre for collector Umberta Gnutti Beretta

RESIDENTIAL, PROJECTS

# Tomèf's bespoke artistic pied-à-terre for collector Umberta Gnutti Beretta

The property blends English charm and Italian style

by Katie de Klee | May 27, 2023 SHARE

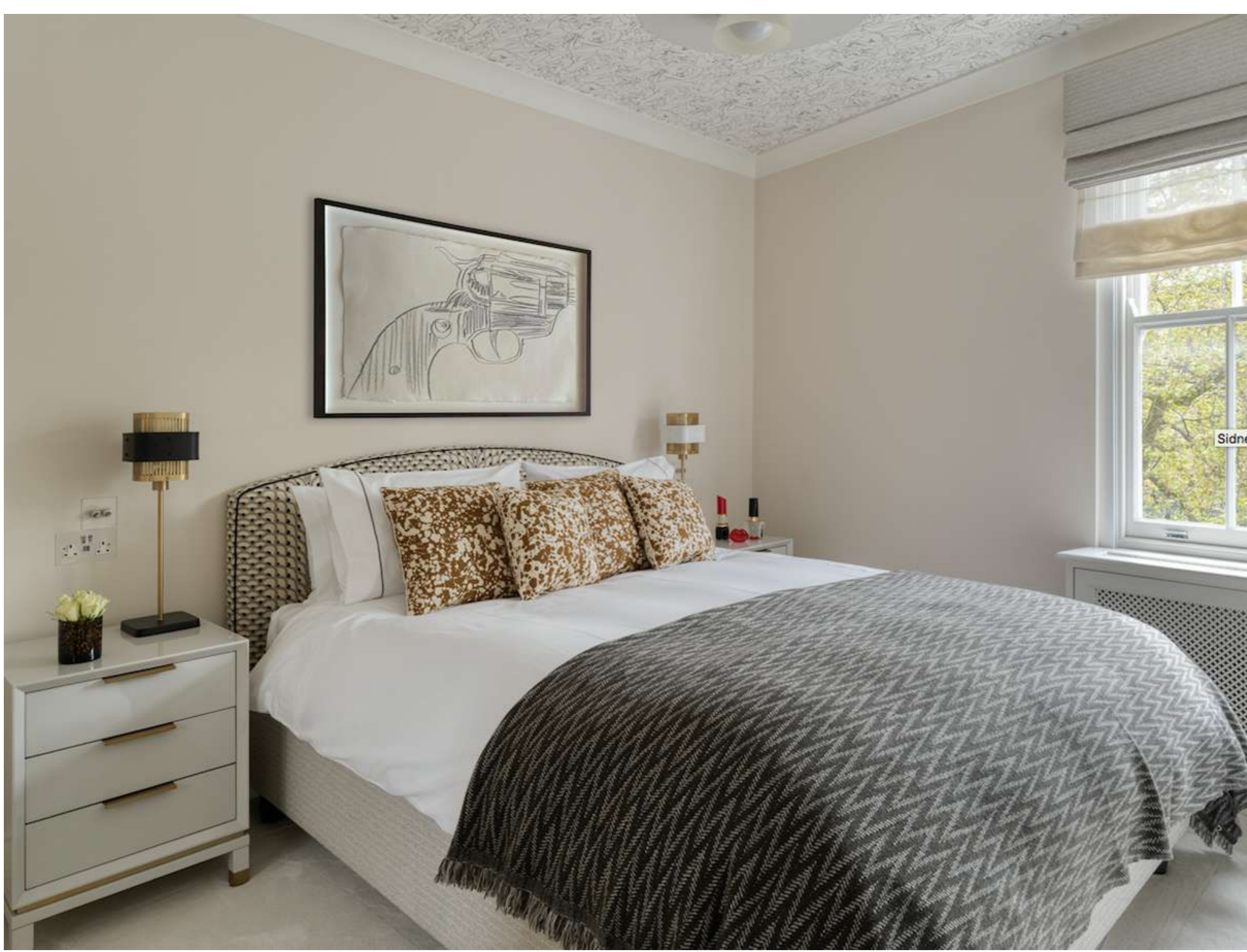


International architecture and interior design studio Tomèf has unveiled a London pied-à-terre meticulously designed for art collector and philanthropist Umberta Gnutti Beretta. This charming apartment, located in a Grade II listed 1850s building in Chelsea, London, offers a remarkable fusion of English charm and Italian style, reflecting the family's deep appreciation for art and design.

Initially uninspiring, the Tomèf design team led a thorough reconfiguration and decoration of the space that revealed its latent potential. The team, founded by Tommaso Franchi, achieved an appealing balance between comfort and refinement, adorning the apartment with elements of English style and accentuating it with nuances of Italian roots and way of living.



The redesigned apartment serves as a versatile backdrop for Beretta's extensive art collections, basking in an abundance of natural light. It features a redesigned larger hall, enhancing the apartment's overall feel and spatial dynamics. As Franchi notes, "Although it's a small flat, the introduction of a larger hall makes it feel much grander than it is, and also allowed us to separate the private bedroom areas from the public living areas".



The design incorporates several bespoke elements, such as a chandelier from Nilufar Gallery in Milan, a shagreen table crafted by French artisans, and an asymmetrically designed, hand-carved Carrara marble mantelpiece in the living room. The mantelpiece, a centrepiece of the living room, pays homage to the family's Italian heritage.

Also noteworthy is the monochrome-themed master bedroom with its erotic wallpaper from Pierre Frey and artwork by Andy Warhol. The Art Deco-inspired bathroom offers a luxurious experience, incorporating three different marbles with brass inlays, all custom-designed by Tomèf. In addition, the second bedroom provides a comfortable, monochrome-themed environment for guests.



Franchi describes Tomèf's work as a careful orchestration of different elements, stating, "Our work at Tomèf is all about striking the right balance. We are like conductors for a well organised orchestra, bringing together many different elements, each beautiful in its own right but even more beautiful when carefully combined with others."

This small but luxurious apartment reflects Tomèf's commitment to precision, detail, and originality. It is a testament to their ethos of blending beauty with function, producing spaces that are not only visually appealing but also conducive to living and experiencing.



TAGGED: [Design](#) [interior design](#)

Previous **Meet the judges for Commercial Interior Design Awards 2023: Hospitality**

Next **Experiential retail: How design innovations enhance customer engagement**

Follow us



About

- About Us
- Contact Us
- Privacy Policy
- Subscribe
- Terms of Use

Categories

- Projects
- People
- Industry Insight
- Products
- Awards

Sister Sites

- Middle East Architect
- Arabian Business
- Aviation Business ME
- Caterer Middle East
- TimeOut Dubai
- Logistics Middle East
- Construction Week
- Online
- Facilities Management
- Digital Studio ME
- Hotelier Middle East
- ITP.net
- MEP Middle East
- PMV Middle East
- Utilities ME
- Oil And Gas Middle East
- Refining & Petrochemicals ME

You have read one article  
[Register for free to access two more articles](#)

Register for free

Subscribe for full access

\$14.99 / month \$5.99 / month

